



# LNG

CAPABILITY STATEMENT

# 2025

[www.safests.com](http://www.safests.com)



# LNG SUPPORT TO GROW THE BUSINESS

## LNG STS EXPERIENCE

### PROJECTS TO DATE

#### LIVORNO OLT

- Consultancy pre start-up
- Incident investigation
- Expansion of services consultancy

#### FSRU (TERMINAL) INDONESIA

- Terminal start-up and POAC Training

#### TURKEY FSRU (TERMINAL)

- POAC for client

#### MALTA FSRU (TERMINAL)

- POAC for client / start-up and initial operations
- Incident investigation root cause analysis

#### ROTTERDAM LNG BUNKERING <sup>1</sup>

- POAC for initial operations
- Ongoing fender equipment advice

#### ROTTERDAM LNG BUNKERING <sup>2</sup>

- Equipment advice

#### MIDDLE EAST / FAR EAST

(4 separate projects)

- LNG Project development
- Permitting

#### SENEGAL LNG FSRU / POWER BARGE

- Consultancy

## CAPT JIM ELLIS

Retained Technical Consultant for SafeSTS / (Jan 20 to date)

### PREVIOUS ROLES

- SVP Bumi Armada
- Operations Director SBM Offshore
- Director of Floating Liquefaction (Excelerate Energy)
- President of BP Shipping USA
- Global Fleet Manager BP Shipping

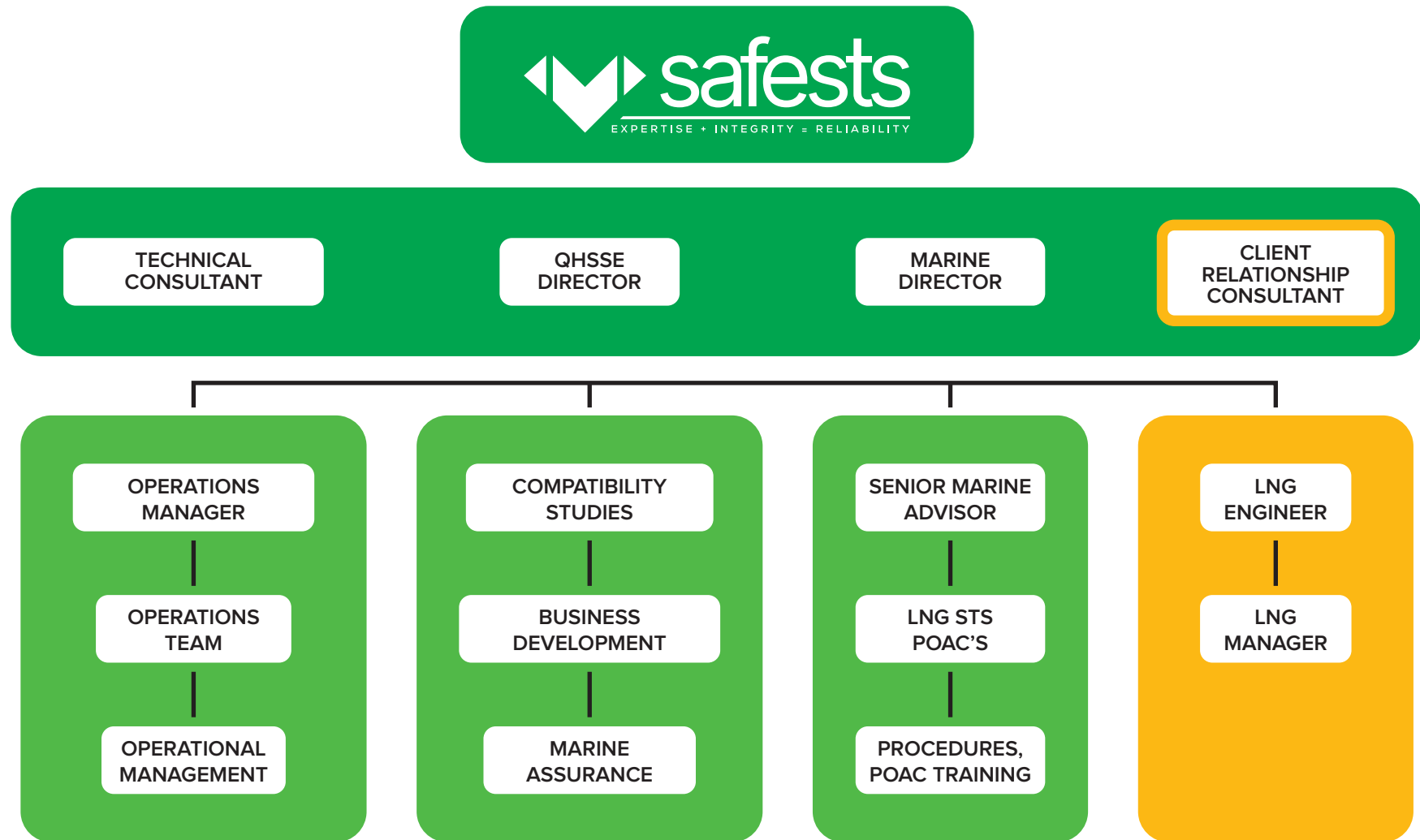
### LNG EXPERIENCE

- A very experienced operations professional in both the marine and offshore worlds and in various roles in business development, specialising in FPSO and FLNG activities.
- Technical and commercial guidance to support the development of Floating Liquefaction solutions Initiated the small scale FLNG strategy and provided guidance to the company for the development of in-house management systems.
- Ran a large team responsible for the safe day to day management of the BP owned and operated fleet and 4 VLGCs. This equated to up to 55 vessels, which included GTT and Moss LNG vessels.



- Engaged in updating the LPG guidelines for OCIMF/SIGTTO/ICS and developing operating philosophies for LNG FPSOs and FSRUs.
- Involved in the technical development of the LNG FPSO and FSRU and also involved in the development of the SYMO (soft yoke mooring and offloading) terminals, SQM's (soft quay mooring terminals) and the floating LNG hose.

# STRENGTHENING LNG STS CAPABILITY FOR GROWTH



SAFESTS EXISTING IN-HOUSE LNG EXPERTISE



CONTRACTED EXTERNAL PERSONNEL READY TO JOIN THE TEAM

## HOW CAN WE HELP YOU?

**Contact us:**

Tel: +44 (0)1379 640021

E-mail: [marine@safests.com](mailto:marine@safests.com)



St Michaels House  
40 Sawmills Road, Diss, IP22 4DA  
UNITED KINGDOM

[www.safests.com](http://www.safests.com)